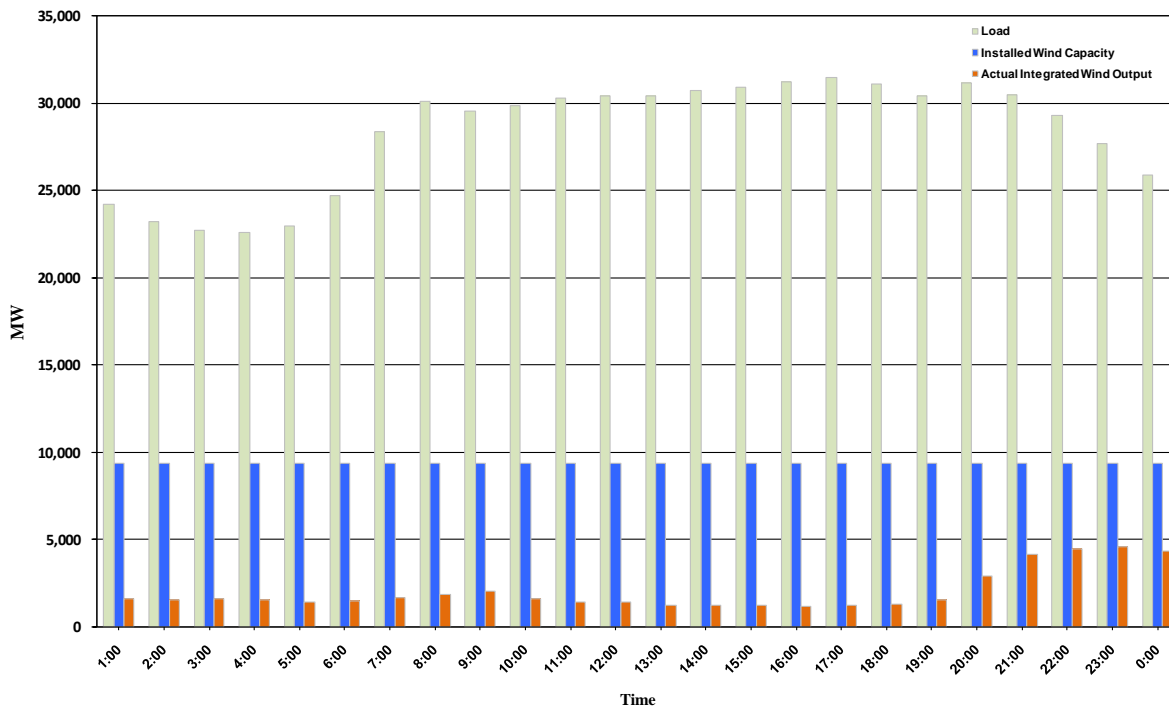




ERCOT Grid Operations Wind Integration Report: 10/29/10

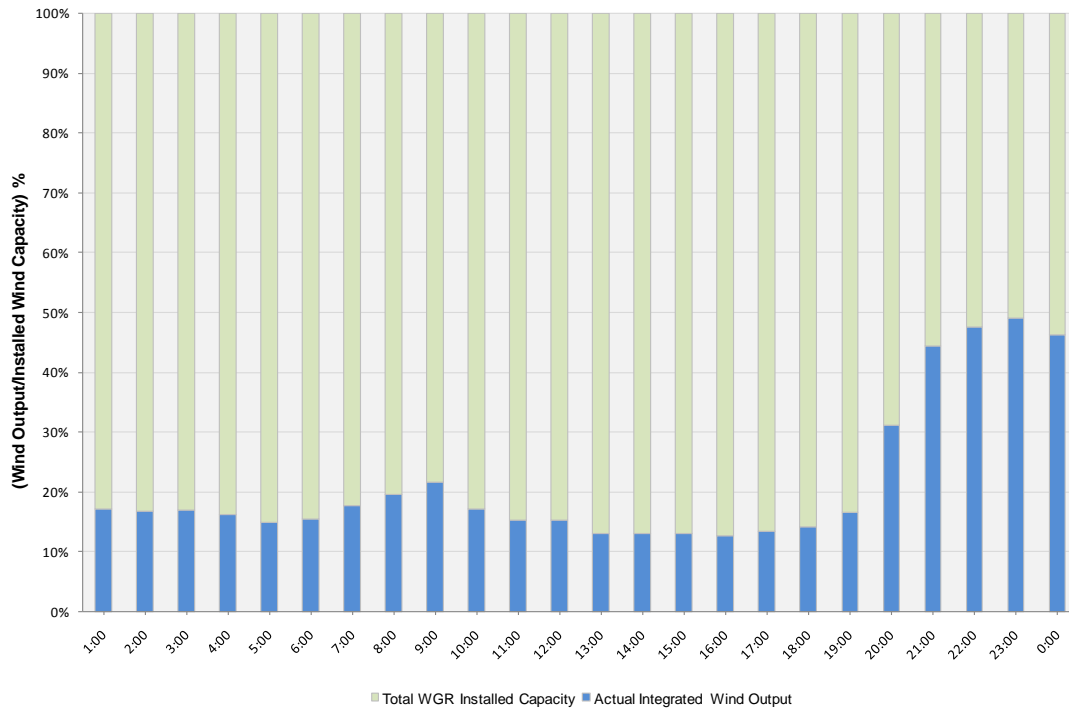
Peak Load	31,456 MW
Load Peak Hour	17
Wind Record 06/12/10	7016 MW
Max Wind value	4980 MW
Wind Peak Hour	22:02:56
Wind Integration %	17.50

Hourly Average Actual Load vs. Actual Wind Output
10-29-2010

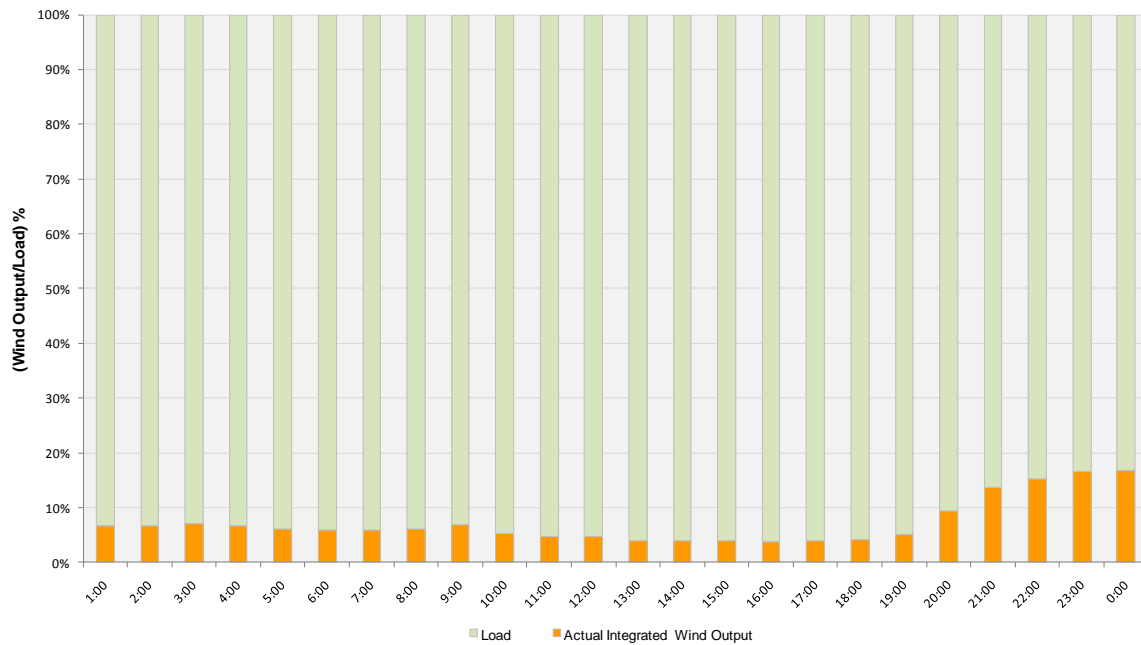




Actual Wind Output as a Percentage of the Total Installed Wind Capacity
10-29-2010



Actual Wind Output as a Percentage of the ERCOT Load
10-29-2010





ERCOT Load vs. Actual Wind Output 10/22/10 - 10/29/10

